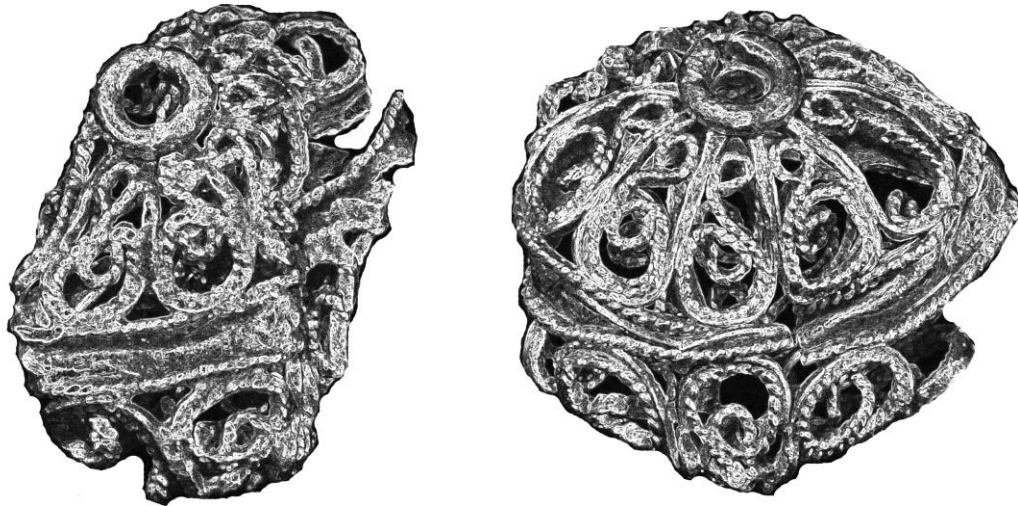


San Jose 1631 Panama

Artifact Graphic Rendering

Description :	Tag#	Date:	Post Weight	Material Type	Recovery Vessel
Gold Filigree	00238-1	10-17-2013	1.8 Grams	Gold	Blue Water Rose
Beads	00167-1	10-4-2013	1.8 Grams	Gold	Blue Water Rose



Artifact Comments: Artifact recovered from the Contadora section of the San Jose site. The intricate gold filigree beads were recovered with light gorgonian concretion deposits. It was found in an area with other assorted jewelry Item, all in restively the same state and damaged condition. The area is approximately 68.5. Meters in length with a basic heading of 34 degrees. Depth at low tide is under 4.5 Meters and is heavily affected by wave action. The highly dynamic environment and rocky bottom conditions could have possibly been a factor of the artifacts damaged recovery condition. One would presume that the beads along with (eleven) other relatively plain gold beads recovered in the area were at one time an assemblage of a singular Item.